



Esophageal Dilator Horizontal Storage Cart

Instructions for Use

Read carefully prior to use.



Manufactured For:

Diversatek Healthcare

Corporate Headquarters

102 E. Keefe Ave.

Milwaukee, WI 53212 USA

P 800.558.6408 | 414.265.7620

sales@diversatekhc.com

DiversatekHealthcare.com

PRODUCT SPECIFICATIONS

Dilator Storage Capacity	Size Closed	Weight Empty
72	41" W x 23" D x 36" H	130-150 lbs.

Features:

- High density design allows for up to 72 horizontally stored dilators
- Unique tray system separates dilators to promote cleanliness and organization
- Locking system
- 405nm disinfecting light
 - Electromagnetic spectrum: Visible spectrum 405nm
 - Electrical Specs: 120V 0.5A Outlet required for AC/DC Power supply providing 12V 0.5A to LED lights
 - Lights are waterproof
- HEPA filtering system
 - Filter Size and rating: 99.97% of the 0.3-micron particles
 - Electrical Specs: 120V 0.5A Outlet required for AC/DC Power supply providing 12V 0.5A to fans
 - Two Fans: 12V DC, 33Db(A), 17 CFM each

INSTRUCTIONS FOR USE

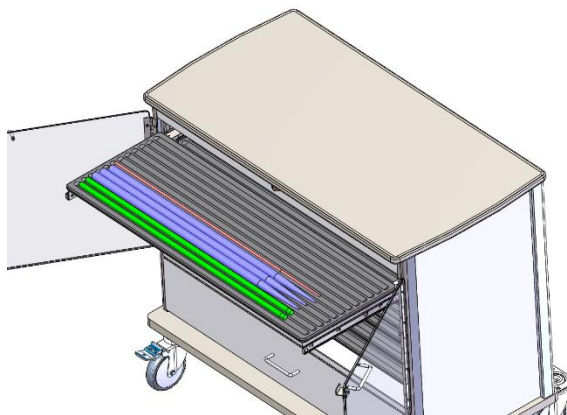
Note: The doors should be closed and locked at all times except when removing or replacing dilators / bougies into the storage unit.

Lock Operation

Simply enter unique number code and turn 90 deg to lock/unlock unit.

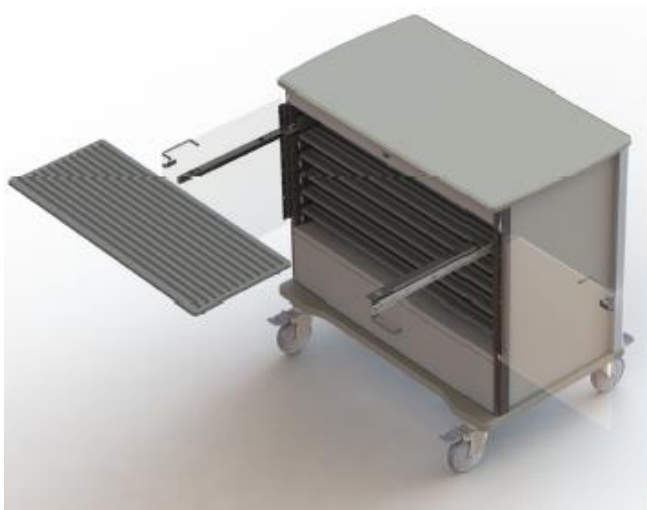
Storing Dilators / Bougies

After opening the door to the cart pull the sliding tray out to its fullest extent. To properly store a dilator/bougie, simply place it in the appropriate tray slot. See diagram below. Only pull out one tray at a time.



Removing & Replacing Trays

To remove a dilator from the cart, pull the tray out to its fully extended position. Then simply lift the bougie or dilator off the tray. If removing the entire tray, pull the tray out to its fully extended position and lift the tray off the drawer glides. Caution: The tray may be very heavy depending on the style and quantity of the dilators/bougies stored on the tray. To replace the tray, simply slide the drawer slides out again and insert the rubber feet on the bottom of the tray into the appropriate holes in the extended drawer slides starting with the furthest back and moving forward.



HEPA Filter/Fan System

The fan runs continuously and requires no interaction from user before scheduled maintenance. Plug in the power adapter to the wall outlet, then insert jack into the cabinet receptacle coming out of the back of the cart. The jack must be unplugged from the cart before moving the cart. See maintenance section for filter replacement details.

405nm Disinfecting Light

The lights run continuous and require no interaction from user before scheduled maintenance. Plug in power adapter to wall outlet, use extension cabinet if needed, then plug power jack into receptable at the back of the cart. The jack must be unplugged from the cart before moving the cart.

Cleaning

The shell of the storage cart is made from epoxy powder coated aluminum. The top and base of the cart are made from laminate particle board. The handle is aluminum. Storage trays are made from pressure-formed laminate. It is recommended that high-touch areas, such as the handle and exterior cart surfaces be cleaned weekly or in compliance with Facility guidelines. It is also recommended that the interior of the cart and top surface grooves of the storage trays, be cleaned once a month or in compliance with Facility guidelines.

All surfaces may be cleaned using a soft, micro-fiber cloth and any standard hospital grade cleaning agent. These include but are not limited to cleaning agents containing:

- Peroxide (up to 4%)
- Chlorine/bleach
- Alcohol
- Ammonia: The clear acrylic doors **should not** be cleaned with any cleaner containing Ammonia. NOTE: many cleaners and Sani cloth wipes contain micro abrasion particles that can scratch and cloud the acrylic overtime. Using alcohol or hydrogen peroxide on a microfiber cloth is recommended.

MAINTENANCE

HEPA Filter

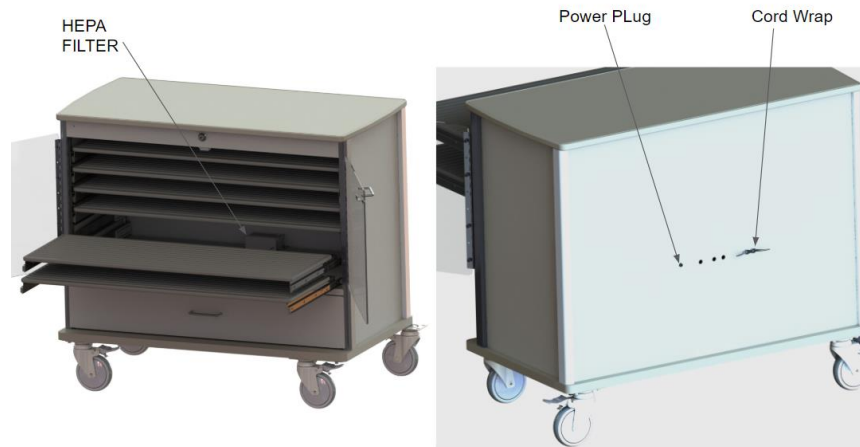
The HEPA filter should be replaced every 6 months or upon visual inspection of excessive dirt buildup. It is located on the inside base of the cart towards the back inner wall.

No tools are required:

Step 1: Remove the bottom two dilator trays

Step 2: Loosen both wing nuts on the filter. They do not need to be removed all the way.

Step 3: Remove filter by pulling it out sideways from the filter box as shown.

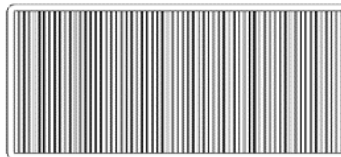


Step 3: Replace with new HEPA filter by sliding into box, keep the “grab tab” towards the outside for easy replacement next time.

Step 4: Tighten wing nuts by hand.

REPLACEMENT PARTS

Replacement HEPA Filter
Part #1214-73



Storage Tray
Part #1214-80

